



The fashionable deluxe Grand Hotel Huis ter Duin has a long-established international reputation.

Superbly situated in the dunes, adjacent to the beach, this five-star deluxe hotel ranks among the very

best in Europe. Nineteen splendid multifunctional rooms and stylish salons make a perfect setting for

any business gathering. Whatever the occasion - a quick business lunch, a lively party, an extensive pro-

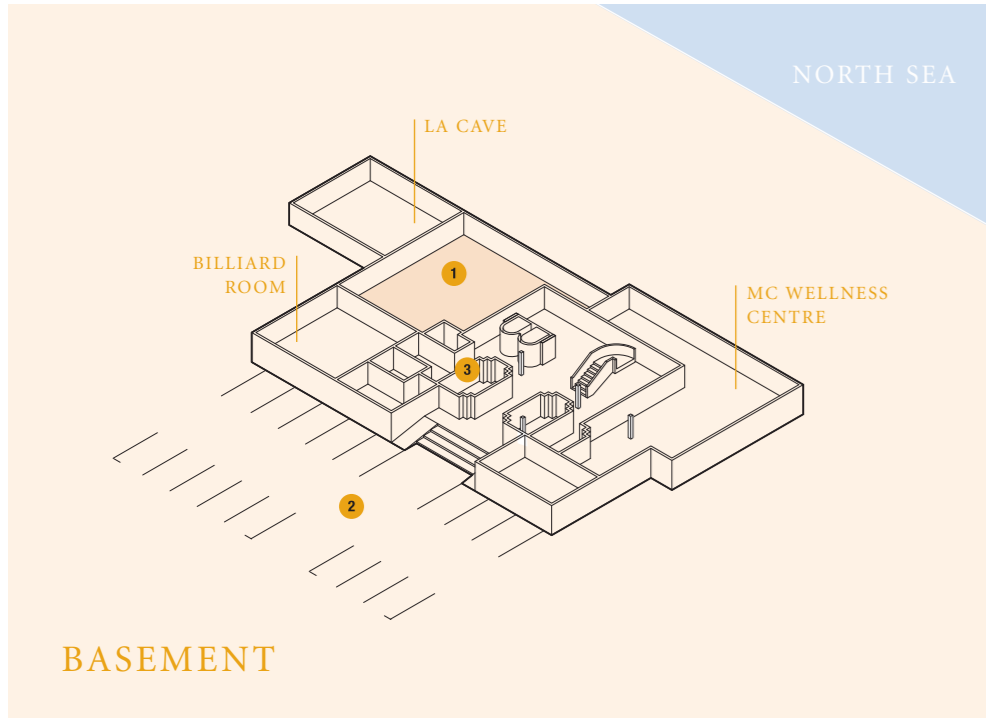
duct presentation or a big international conference - more and more guests from the Netherlands and

abroad are discovering Grand Hotel Huis ter Duin. And our traditional hospitality naturally includes

catering to all your specific wishes.



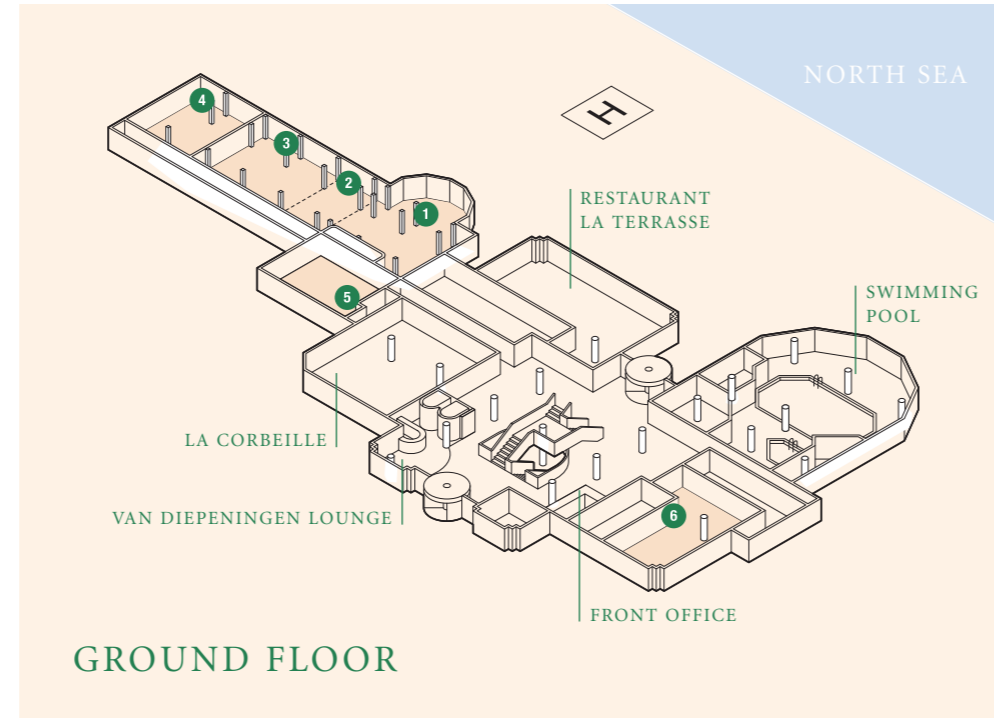
WHATEVER THE OCCASION
SUMMARY OF ROOMS AND CAPACITIES



BASEMENT

SUMMARY OF ROOMS AND CAPACITIES

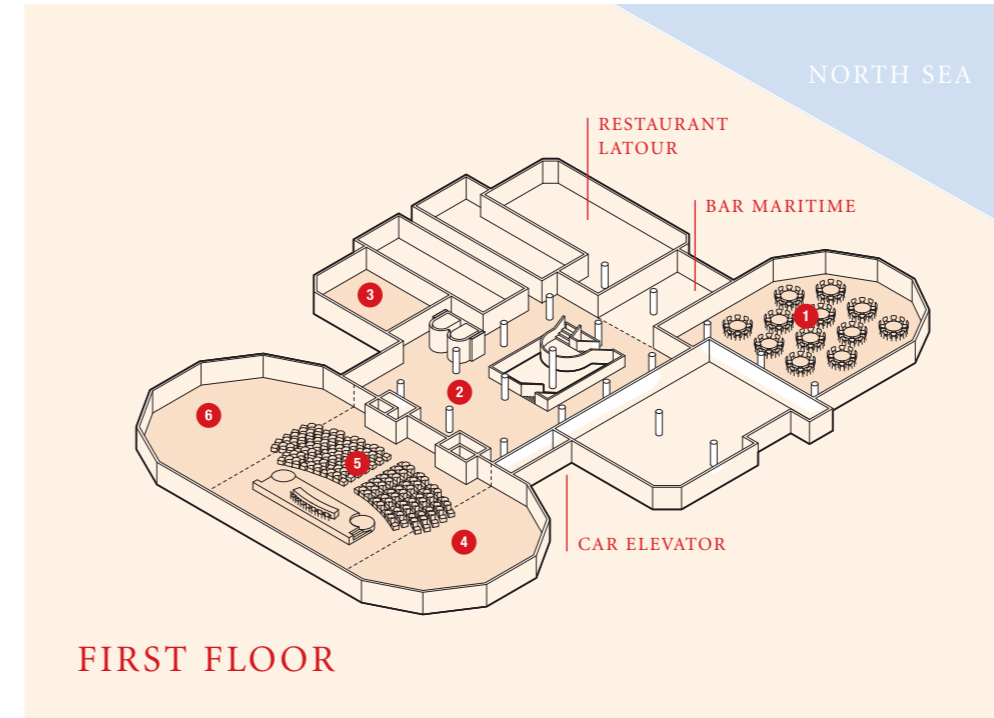
- | | |
|-----------------------|--|
| 1. Club Conversation: | <ul style="list-style-type: none"> • Dinnerbuffet up to 150 persons • Reception up to 200 persons • Area 400 m² (LxWxH=20x20x3 mtr.) |
| 2. Parking space: | <ul style="list-style-type: none"> • Garage 200 cars • Car Park 150 cars |
| 3. Shop | |



GROUND FLOOR

SUMMARY OF ROOMS AND CAPACITIES

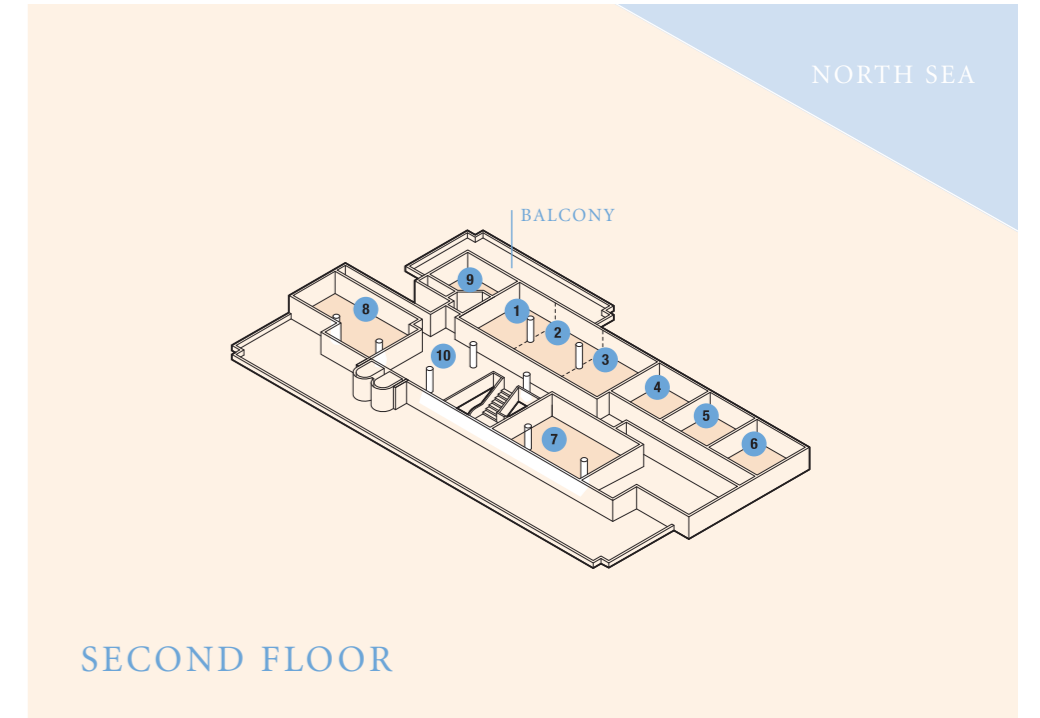
	THEATRE	SCHOOL	BOARDROOM	SQUARE	CABARET	U-SHAPE	DINNER	RECEPTION	M ²	LXWXH (MTR)
1. Margriet Salon	70	30	20	34	50	30	100	100	180	20x9x3
2. Irene Salon	10	-	-	14	10	10	10	-	32	4x8x3
3. Christina Salon	50	20	20	22	42	18	50	60	80	9x9x3
4. Beatrix salon	40	20	20	22	42	18	40	40	80	9x9x3
Margriet + Irene	80	40	40	44	60	40	110	120	190	21x9x3
Irene + Christina	60	30	30	32	52	28	60	70	117	13x9x3
Margriet + Irene + Christina	130	60	60	60	100	56	160	250	280	31x9x3
5. Juliana Lounge	-	-	-	-	-	-	-	60	81	
6. D.C. Room	40	30	20	30	48	25	40	100	136	17x8x3



FIRST FLOOR

SUMMARY OF ROOMS AND CAPACITIES

	THEATRE	SCHOOL	BOARDROOM	SQUARE	CABARET	U-SHAPE	DINNER	RECEPTION	M ²	LXWXH (MTR)
1. Keizerzaal	400	220	60	84	220	65	300	400	400	22x20x5
2. Tappenbeck Foyer	-	-	-	-	-	-	-	600	500	26x23x3
3. Van Berckel Lounge	100	65	26	46	60	36	90	150	120	12x10x3
4. Pické I	250	130	60	70	150	52	240	350	374	17x22x5
5. Pické II	300	180	60	70	200	52	250	350	330	15x22x5
6. Pické III	250	130	60	70	150	52	240	350	374	17x22x5
Pické I+II	650	300	80	130	300	100	530	700	682	31x22x5
Pické II+III	650	300	80	130	300	100	530	700	682	31x22x5
Pické I+II+III	1050	500	200	220	560	200	820	1050	1056	48x48x5



SECOND FLOOR

SUMMARY OF ROOMS AND CAPACITIES

	THEATRE	SCHOOL	BOARDROOM	SQUARE	CABARET	U-SHAPE	DINNER	RECEPTION	M ²	LXWXH (MTR)
1. Panorama 1	50	25	16	25	36	20	20	80	54	9x6x3
2. Panorama 2	60	35	20	30	42	25	20	90	67½	9x7½x3
3. Panorama 3	60	35	20	30	42	25	20	90	67½	9x7½x3
4. Panorama 4	40	25	16	22	30	18	20	50	56	7½x7½x3
5. Panorama 5	40	25	16	22	30	18	20	50	56	7½x7½x3
6. Panorama 6	40	25	16	22	25	18	10	40	49	7x7x3
7. Panorama 7	80	35	32	32	60	35	60	120	108	12x9x3
8. Panorama 8	80	45	32	34	60	35	60	120	126	14x9x3
9. Boardroom	Standard boardroom table for 12 persons								28	8x3½x3
10. Foyer 2 with a Business Centre for your:								117	9x13x3	<ul style="list-style-type: none"> • Complete conference support • Prints, photocopying, fax and telephone • Shuttle service